



TECHNIWATCH

swiss precision tools

EYELIDLIGHT

Make the most of the light, and control eye fatigue!

70 TO 80% REDUCTION IN EYE FATIGUE

To address a recurrent issue, we have designed this visor, adaptable to any lamp on the market. With 7 widths available, you can choose the one best suited to your needs.

Hence you will be able to block out radiation in the direction of your eyes, without affecting the quantity of light in the workplace.

With this folding and adjustable visor, you can also optimise the direction of light flow, and ensure that the lamp remains horizontal.

Complementing 30 cm naked eye inspections of objects, it will improve your work quality and productivity. The product has been validated by an official health organisation, to safeguard your well-being in both private and professional use.



Technical specifications:

- Friction hinge
- To be stuck with adhesive provided
- Matt black
- 7 widths: 200 / 280 / 320 / 380 / 440 / 545 / 610 mm

Size:

Width 200 to 610 mm
Height 60 mm

Weight:

From 75 to 250 grams

References:

H463000-200
H463000-280
H463000-320
H463000-380
H463000-440
H463000-545
H463000-610

Techniwatch SA

Route de la Jaluse 5b,
2400 Le Locle
Tel : 032 926 19 46
www.techniwatch.ch

Discover our presentation videos on our Youtube channel « Techniwatch SA »
Also accessible by scanning the following QR code





TECHNIWATCH

swiss precision tools

EYELIDLIGHT

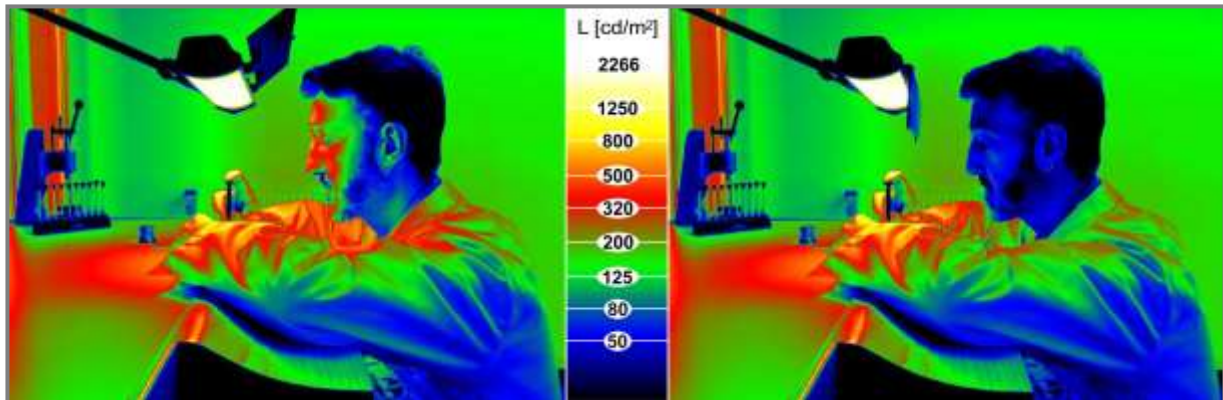
Product details

RECOMMENDATIONS:

Carry out a test before permanently gluing on the EyelidLight, to define the ideal position to stop light from passing.

Also check that you can fold up the visor to its raised position.

Degrease the lamp surface thoroughly, and glue on the hinges, making sure that they are joined onto the visor.



WITHOUT PROTECTION

WITH EYELIDLIGHT

Techniwatch SA

Route de la Jaluse 5b,
2400 Le Locle
Tel : 032 926 19 46
www.techniwatch.ch

Discover our presentation videos on our Youtube channel « Techniwatch SA »
Also accessible by scanning the following QR code

